



COLLECTIONS

EXCLUSIVE
ACRYLIC PRESTIGE
WHITE LADY
BLACK STAR
CREATIVE 100%
GLAMOUR WITH SWAROVSKI CRYSTALS
GAMMA

COLLECTIONS

EXCLUSIVE

**The most versatile,
perfectly tailored line**

80+ cover options in
a textile, leatherette or
velvet & suede finish

Products available:

- Photo Album
- Photo Book Pro
- DreamBook 4K
- Complete Set
- Folio Box
- Album Box
- Traditional Self-Mount Album
- USB Case
- Box for Prints

Cover Patterns

Go plain with none or choose from a wide
range of cut-out windows
(preview on 12x12" / 30x30 cm cover)



T1



T2



T3



T4



T5



T6



T7



T8



T9



T10

Personalisation

UV print / embossed text (leatherettes) / laser etch /
padded cover / spacers (Photo Album and Complete
Album Set) / rounded corners (Photo Album and
Complete Album Set) / metal corners (Photo Album) /
edge seam (Photo Album in leatherettes)

COLLECTIONS

ACRYLIC PRESTIGE

Astonishes with its striking edge-to-edge acrylic cover

A staple of this collection, each product comes with an acrylic cover plate standard with 5 styles available

Products available:

- Photo Album
- Photo Book Pro
- DreamBook 4K
- Complete Set
- Folio Box
- Album Box
- Traditional Self-Mount Album

Cover Patterns

Wide range of acrylic windows
(preview on 12x12"/ 30x30 cm cover)



AP1



AP2



AP3



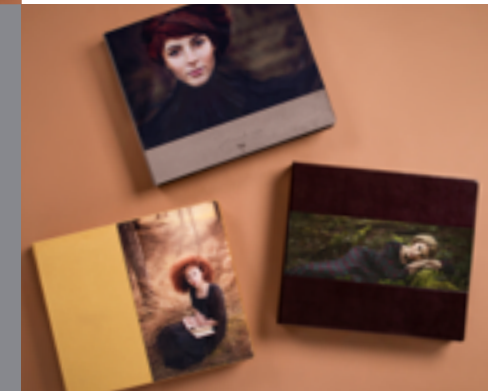
AP4



AP9

Personalisation

UV print / embossed text (leatherettes) / laser etch / padded cover / spacers (Photo Album and Complete Album Set) / rounded corners (Photo Album and Complete Album Set)



COLLECTIONS

WHITE LADY

**A product to match
the dress – clean,
elegant, sophisticated**

Available in white or
black leatherette and
the option of three
cover patterns with an
engraved white acrylic
frame

Products available:

- Photo Album
- Complete Album Set
- Traditional Self-Mount Album
- Album Box

Cover Patterns

Choose amongst a selection of cover
options with a white, engraved, acrylic
plate (preview on 12x12"/ 30x30 cm
cover)



BD1



BD2



BD3

Personalisation

UV print / embossed text (leatherettes) / laser etch /
padded cover / spacers (Photo Album and Complete
Album Set)

COLLECTIONS

BLACK STAR

Seven sleek, engraved acrylic plate designs to choose from accentuating the cover and leaving an indelible impression

The Black Star is sure to be just that: the star of your collection

Products available:

- Photo Album
- Complete Album Set
- Traditional Self-Mount Album
- Album Box



SG1



SG3



SG4



SG5



SG6



SG7



SG8

Personalisation

UV print / embossed text (leatherettes) / laser etch / padded cover / spacers (Photo Album and Complete Album Set) / rounded corners (Photo Album and Complete Album Set)

COLLECTIONS

CREATIVE 100%

For those ultra-creative photographers this collection gives complete control over the final design

With the ability to add your own photos to the covers, this collection's opportunities are endless. Truly 100% Creative

Products available:

- Photo Album
- Photo Book Pro
- DreamBook 4K
- Album Box
- Traditional Self-Mount Album
- Box for Prints
- USB Case

Personalisation

padded cover / spacers (Photo Album) / rounded corners (Photo Album) / glossy or matte laminate

COLLECTIONS

GLAMOUR WITH
SWAROVSKI CRYSTALS

The combination of sophistication from Swarovski crystals and innovation from a modern design make this collection the highest of end

Our Glamour with Swarovski Crystals Collection is ideal for those intimate and elegant occasions alike

Products available:

- Photo Album
- Traditional Self-Mount Album

Cover Patterns

Unique combination of Swarovski crystals in five different patterns to adorn your album's cover
(preview on 12x12"/ 30x30 cm cover)



SV1



SV2



SV3



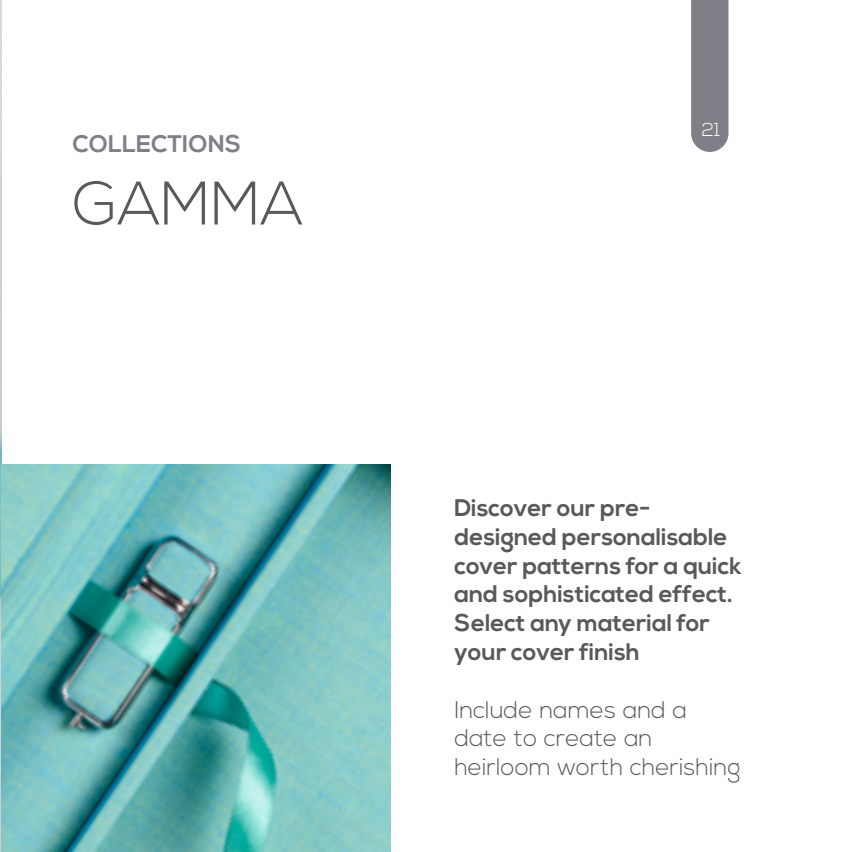
SV4



SV5

Personalisation

UV print / laser etch / embossed text / padded cover / spacers / rounded corners



COLLECTIONS
GAMMA

Discover our pre-designed personalisable cover patterns for a quick and sophisticated effect. Select any material for your cover finish

Include names and a date to create an heirloom worth cherishing

- Products available:**
- Complete Photo Set
 - Photo Album
 - Photo Book Pro
 - Album Box
 - Traditional Album

Cover Patterns
UV printed or laser etched cover patterns that can be complemented with sublime Swarovski crystals and decadent design

More cover materials & patterns available on our website

Personalisation
UV print / laser etch / padded cover / Swarovski crystals / spacers / rounded corners





SETS

COMPLETE SET
FOLIO BOX



SETS

COMPLETE SET

25

Cover all the bases; and do it in style

This 3-in-1 product includes a full Photo Album, DreamBook 4K, OR Photo Book Pro; a matching box; and a USB (optional)



Product available with:

- Photo Album
- DreamBook 4K
- Photo Book Pro

Available Collections

(depending on the product):

- Exclusive
- Acrylic Prestige
- White Lady
- Black Star
- Gamma

Available Sizes

(collection dependent):
8x8" (20x20 cm)
10x10" (25x25 cm)
12x8" (30x20 cm)
12x12" (30x30 cm)
16x12" (40x30cm)
18x12" (45x30cm)

Personalisation (collection dependent):

UV print / embossed text (leatherettes) / laser etch / padded cover / spacers / rounded corners (Photo Album)

Paper Types

Fuji Silk / Fuji Pearl (Metallic) / Fuji Silk & Fuji Pearl (Metallic) / Canon Deep Matte / Mohawk Eggshell

Bonus Tip: Upselling made easier now with Matted or Board Mounted Prints available separately.



SETS

FOLIO BOX

The perfect memory box for Matted and Mounted Prints that come ready to present the moment you receive them

Choose an edge-to-edge acrylic cover option or opt for an elegant cut-out window or just text on the cover of your Folio Box.



- The Folio Box includes:**
- An elegant handcrafted box
 - A set of 5, 10, 15 or 20 images
 - USB (optional)
 - 80+ cover options in textile, leatherette, or velvet & suede finish
 - Select either Board Mounted Prints or Matted Prints (a wide range of mat colours)
 - Available in the Exclusive or Acrylic Prestige Collection

- Available Sizes**
- 5x7" (13x18 cm)*
 - 8x8" (20x20 cm)
 - 8x10" (20x25 cm)*
 - 8x12" (20x30 cm)*
 - 10x10" (25x25 cm)
 - 11x14" (28x36 cm)*
 - 12x16" (30x40 cm)*
- *Landscape & portrait format

Personalisation
UV print / laser etch / embossed text

Paper Types
Canon Deep Matte (Matted Prints only) / Fuji Silk / Mohawk Eggshell

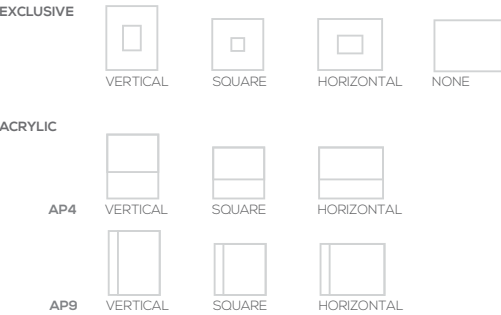




PHOTO PRODUCTS

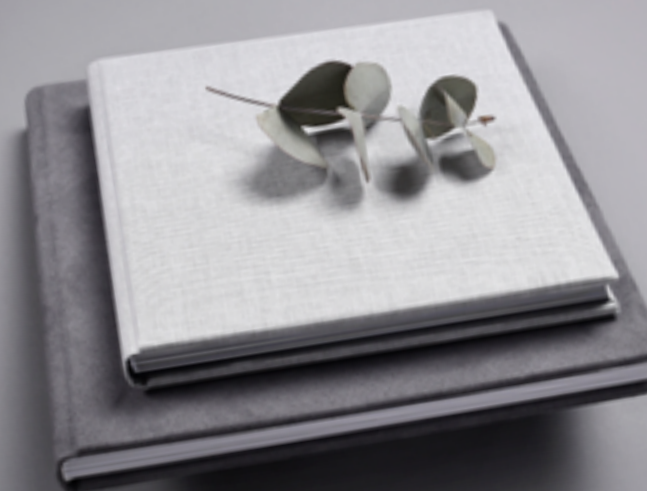
PHOTO ALBUM
PHOTO BOOK PRO
DREAMBOOK 4K
PHOTO BOOK BASIC
TRADITIONAL ALBUM
TRIPLEX
LUXURY GREETING CARD
BOX FOR PRINTS

PHOTO PRODUCTS

PHOTO ALBUM



Bonus Tip: Complement your Photo Album with a matching box and optional USB by ordering a Complete Set (see page 25)



Hand-crafted Photo Albums are thick, rigid, durable, flush mount heirlooms that showcase both quality and elegance

Their lay-flat design allows for stunning full-spread panoramic prints

Photo Album Collections:

- Exclusive
- Acrylic Prestige
- White Lady
- Black Star
- Glamour with Swarovski Crystals
- Creative 100%
- Gamma

Choose amongst four paper options from three of the latest printing technologies:

Fuji Silk (standard) using Noritsu HD technology*
Fuji Pearl (Metallic) using Noritsu HD technology*
Deep Matte from the Canon DreamLabo 5000
Mohawk Eggshell from the HP Indigo

*These two paper types have the option of both being included in the same album on a spread-by-spread basis.

Available Sizes

(collection dependent):
 6x6" (15x15 cm)
 6x8" (15x20 cm)
 8x6" (20x15 cm)
 8x8" (20x20 cm)
 8x12" (20x30 cm)
 10x10" (25x25 cm)
 12x8" (30x20 cm)
 12x12" (30x30 cm)
 14x11" (36x28cm)
 16x12" (40x30 cm)
 18x12" (45x30 cm)

Personalisation

UV print / embossed text (leatherettes) / laser etch / padded cover / spacers / rounded corners

Paper Types

Fuji Silk / Fuji Pearl (Metallic) / Fuji Silk & Fuji Pearl (Metallic) / Canon Deep Matte / Mohawk Eggshell



PHOTO PRODUCTS

PHOTO BOOK PRO



Bonus Tip: Complement your Photo Book Pro with a matching box and optional USB by ordering a Complete Set (see page 25)



The ultra-modern seven dye ElectroInk from the HP Indigo 12000 makes this an eye-popping powerhouse more than worthy of any pro

Photo Books Pro Collections are available in the following Collections:

- Exclusive
- Acrylic Prestige
- Creative 100%
- Gamma

Seven-Gamma liquid ink with incredible output

Choose amongst 80+ textile, leatherette and velvet & suede cover options

Design between 20 – 120 pages

Four paper options to choose from

Available Sizes

(collection dependent):
12x8" (30x20 cm)
12x12" (30x30 cm)
16.5x12" (42x30 cm)

Personalisation

UV print / embossed text (leatherettes) / laser etch / padded cover

Paper Types

Mohawk Eggshell (216 gsm) / Mohawk Eggshell (148 gsm) / Felix Schoeller Luster (190 gsm) / Arctic Matte (170 gsm)





Bonus Tip: Complement your DreamBook 4K with a matching box and optional USB by ordering a Complete Set (see page 25)



DreamBook 4K Collections:

- Exclusive
- Acrylic Prestige
- Creative 100%

Lay-flat pages at 4K definition

Stunning full spread prints

Design between 20 – 120 pages

Choose among 80+ textile, leatherette and velvet & suede cover options

Three different papers to choose from

PHOTO PRODUCTS

DREAMBOOK 4K



Redefine what's possible in print

Ultra high-tech meets hand-crafted tradition with our DreamBook 4K

Printed using the Canon DreamLabo 5000 with 2400DPI and 4K definition; images come to life

Available Sizes
(collection dependent):
8x8" (20x20 cm)
12x8" (30x20 cm)
12x12" (30x30 cm)
18x12" (45x30 cm)

Personalisation
UV print / embossed text (leatherettes) / laser etch / padded cover

Paper Types
Canon Gloss (275 gsm) / Canon Luster (275 gsm) / Canon Satin (170 gsm)



PHOTO PRODUCTS

PHOTO BOOK BASIC

Our cost-effective Photo Book Basic maintains a high integrity but at a lower price tag

Printed on the HP Indigo 12000

At a Glance:

Seven-dye liquid ink with pro level results

Design between 28 – 160 pages

Prints display incredible depth and reproduce natural colours

Use your own photo to adorn the cover

Currently unavailable for US shipping. For bulk orders please contact customer service.

Available Sizes

8x8" (20x20 cm)
8x12" (20x30 cm)
12x8" (30x20 cm)
12x12" (30x30 cm)

Personalisation

glossy or matte laminate / padded cover

Paper Type

Digi Silk (200 gsm)



PHOTO PRODUCTS

39

TRADITIONAL ALBUM



The classic product with a modern design. Offer your clients a traditional way of keeping their memories



Available in seven collections:

- Exclusive
- White Lady
- Black Star
- Acrylic Prestige
- Creative 100%
- Glamour with Swarovski Crystals
- Gamma

Choose either black or white pages

Choose either 40, 60 or 100 pages

Currently unavailable for US shipping. For bulk orders please contact customer service.

Sizes:

12x12" (30x30 cm)
13x13" (33x33 cm)

Personalisation

UV print / laser etch / embossed text (leatherettes)

PHOTO PRODUCTS

TRIPLEX

A tri-fold centerpiece
with the look, feel, and
quality of our albums

Give your clients a
story in three profound,
poignant portraits

At a Glance:

Noritsu HD printing technology

Tri-fold leatherette bound

Choose among 20+ leatherette cover
options

A perfect gift and ideal upselling product

Great home decor idea

Available Sizes

6x6" (15x15 cm)
6x9" (15x23 cm)
7x7" (18x18 cm)
7x10" (18x26 cm)
8x8" (20x20 cm)
8x12" (20x30 cm)

Personalisation

UV print / laser etch

Paper Type

Fuji Silk



PHOTO PRODUCTS

LUXURY GREETING CARD

Stylish. Refined. Luxurious.
Greetings Cards at a whole
new level including your
own design

Rigid Silk paper, images exposed onto the paper with Noritsu HD technology assures that cards are both elegant and everlasting

Sizes

6x6" (15x15 cm)
6x8" (15x20 cm)
8x6" (20x15 cm)
8x8" (20x20 cm)
8x12" (20x30 cm)
12x8" (30x20 cm)

Paper Type

Fuji Silk

Along with our Triplexes (see page 41) these make an ideal upselling tool especially around the holiday season

It can be used as:

wedding invitation
thank you card
new baby announcement card
birthday card
anniversary card
christening or communion card
congratulations card
Christmas card
gift voucher
business marketing tool etc

Currently unavailable for US shipping. For bulk orders please contact customer service.



PHOTO PRODUCTS

BOX FOR PRINTS

A hand-crafted, designer box marrying simplicity with elegance to both protect prints and add a touch of luxury

Available Collections:

- Exclusive
- Creative 100%

80+ cover options in textile, leatherette and velvet & suede finish

Available Depths:

- 1.6 cm (holds 20-50 prints)
- 3 cm (holds up to 100 prints)

Available with or without a USB stick

Fits both Prints and DreamPrints

Sizes

(collection dependent):
 6x4" (15x10cm)
 7x5" (18x13cm)
 9x6" (23x15cm)
 10x8" (15x20cm)

Personalisation

UV print / laser etch



PRINTS AND LARGE FORMATS

DREAMPRINTS
PRINTS
LARGE FORMATS

PRINTS AND LARGE FORMATS

LARGE FORMATS

Poster-sized prints in
superb pro quality

Take your pictures to the next level with the
available large sizes and formats

Three types to choose from available as:
Prints Pro
Prints Basic
A3/A4 Prints Set

A variety of print technologies and paper
types at your disposal

Currently unavailable for US shipping. For
bulk orders please contact customer service

Prints PRO/BASIC
Available Sizes:

- 12x12" (30x30 cm)
- 16x16" (40x40 cm)
- 20x20" (50x50 cm)
- 24x24" (60x60 cm)
- 28x28" (70x70 cm)
- 8x12" (20x30cm)
- 8x24" (20x60cm)
- 12x16" (30x40cm)
- 12x18" (30x45cm)
- 12x20" (30x50cm)
- 12x35" (30x90cm)
- 16x24" (40x60cm)
- 20x28" (50x70cm)
- 24x31" (60x80cm)
- 24x35" (60x90cm)
- 28x39" (70x100cm)

Prints SET

- A3:**
11,7x16,5" (29,7x42cm)
- A4:**
8,3x11,7" (21x29,7cm)



WALL DECOR

DIBOND METAL PRINT
FRAMED DIBOND METAL PRINT
STACKED DIBOND METAL PRINT
ACRYLIC PRINT
STACKED ACRYLIC PRINT
FRAMED PRINT
MDF WOOD MOUNTED PRINT
FOAM MOUNTED PRINT
CANVAS

WALL DECOR

DIBOND METAL PRINT



Both a modern and extremely-resistant material, our Dibond Metal Prints are cutting-edge metal displays.

Images are printed on raw, horizontally
- brushed aluminium Dibond adhered to
a black, 6 mm MDF backboard with 8mm
MDF wall mounts attached.

- suitable for any type of photography
- weather resistant properties
- display anywhere in your home
- comes ready to hang on the wall

Available in 5 sizes and three formats:
square, landscape, portrait

Sizes

8x8" (20x20cm)
8.5x12" (21x30cm)
12x8.5" (30x21cm)
12x12" (30x30cm)
12x16.5" (30x42cm)
16.5x12" (42x30cm)
20x28" (50x70cm)
28x20" (70x50cm)



WALL DECOR

FRAMED DIBOND METAL PRINT



Framed Dibond Metal Prints are enclosed in a black, aluminum frame to add an extra touch of character to this modern must-have.

Dibond Metal Prints utilize a UV printing format directly applying your images to a horizontally brushed aluminium plate. This produces a marvelous glossy and textured finish for a true artistic display. The product is finished-off with a durable, black aluminium frame.

Images are printed on raw, horizontally -brushed aluminium Dibond adhered to a black, 6 mm MDF backboard with 8mm MDF wall mounts attached.

- suitable for any type of photography
- weather resistant properties
- display anywhere in your home
- comes framed and ready to hang on the wall

Sizes

8x8" (20x20cm)
 8x12" (21x30cm)
 12x8" (30x21cm)
 12x12" (30x30cm)
 12x16.5" (30x42cm)
 16.5x12" (42x30cm)
 20x28" (50x70cm)
 28x20" (70x50cm)



WALL DECOR

STACKED DIBOND METAL PRINT



Our high-strength, low-weight Dibond Metal Prints mounted and stacked onto an oversized MDF backboard; leaving a floating and framed visual effect.

Have your artwork literally stand-out with the Stacked Dibond Metal Prints. The print itself is printed directly onto horizontally-brushed aluminium to create a strikingly glossy, reflective finish.

Hang your product with ease, as it comes fitted with 8mm MDF wall mounts attached to the back

Choose either black MDF board or MDF board finished with a white passepartout.

Sizes

8x8" (20x20cm)
 8.5x12" (21x30cm)
 12x8.5" (30x21cm)
 12x12" (30x30cm)
 12x16.5" (30x42cm)
 16.5x12" (42x30cm)
 20x28" (50x70cm)
 28x20" (70x50cm)



WALL DECOR

ACRYLIC PRINT

Beneath a sensational glass-like acrylic face, lies a high-end, pigment ink, professional print, printed on a smooth, matte-finish, professional-grade paper.

This absolutely breathtaking product features an image set beneath a striking 6mm acrylic plate then elevated on 8mm MDF wall mounts.

Sizes

8x8" (20x20cm)
 8.5x12" (21x30cm)
 12x8.5" (30x21cm)
 12x12" (30x30cm)
 12x16.5" (30x42cm)
 16.5x12" (42x30cm)
 20x28" (50x70cm)
 28x20" (70x50cm)





WALL DECOR

65

STACKED ACRYLIC PRINT



Take your business, or professional studio, to the next level with our Stacked Acrylic Print.

This product matches perfectly with any genre of photography and makes for a great wall décor in any space of a home.

Underneath the impressive acrylic face, lies a high-end professional print printed on professional-grade paper.

Stacked onto an over-sized MDF board to give a raised look and an optical frame.

Available with optional passepartout finish.

Sizes

8x8" (20x20cm)
8.5x12" (21x30cm)
12x8.5" (30x21cm)
12x12" (30x30cm)
12x16.5" (30x42cm)
16.5x12" (42x30cm)
20x28" (50x70cm)
28x20" (70x50cm)



WALL DECOR

FRAMED PRINT



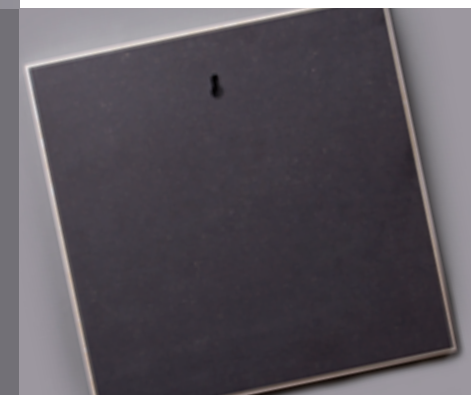
Adding even a small detail such as a frame can dramatically change the presentation of the image. Traditional framed prints remain the go-to photo product for most professional photography clients.

Frames come available in 3 colour options: Brown, Black, White

Two paper types to choose from: Canon Satin/Mohawk Eggshell

Sizes

8x8" (20x20cm)
 8.5x12" (21x30cm)
 12x8.5" (30x21cm)
 12x12" (30x30cm)
 12x16.5" (30x42cm)
 16.5x12" (42x30cm)
 20x28" (50x70cm)
 28x20" (70x50cm)



WALL DECOR

MDF WOOD MOUNTED
PRINT

The MDF Wood Mounted Print is a high-end, yet versatile wall décor piece printed onto professional photo paper then mounted onto an MDF board.

Sizes

8x8" (20x20cm)
 8.5x12" (21x30cm)
 12x8.5" (30x21cm)
 12x12" (30x30cm)
 12x16.5" (30x42cm)
 16.5x12" (42x30cm)
 20x28" (50x70cm)
 28x20" (70x50cm)

A matte finish photographic print mounted on 6mm MDF backboard; ready to display, and ready to impress.

Extra laminated photo finish for an extra protective layer makes this product extremely scratch-resistant.



WALL DECOR

FOAM MOUNTED PRINT

Your incredible photographic prints mounted on durable 5mm thick foam

The lightweight foamboard improves image stability and prevents warping

Images mounted on lightweight, photographic PVC foam board

Lightweight PVC foam mounted print

Ready to hang on the wall

Similar to our Canvases (see page 73) the Epson Ultrachrome HDR (High Dynamic Range) ink's added green and orange makes the highest level of colour accuracy possible

Currently unavailable for US shipping. For bulk orders please contact customer service.

Sizes

1:1

12x12 (30x30cm)
16x16" (40x40cm)
20x20" (50x50cm)
24x24" (60x60cm)
28x28" (70x70cm)

3:1*

8x24" (20x60cm)
12x35" (30x90cm)

3:2*

8x12" (20x30cm)
12x18" (30x45cm)
12x20" (30x50cm)
16x24" (40x60cm)
20x28" (50x70cm)
24x35" (60x90cm)
28x39" (70x100cm)

4:3*

12x16" (30x40cm)
24x31" (60x80cm)

*Available in both landscape and portrait format

WALL DECOR

CANVAS

An essential, light-weight wall decor presenting your artwork in stunning detail

Perfectly stretched 250 gsm canvas sheets mounted on a solid pine wood frame

Felt finished backing

Featuring two extra colours – green and orange – the Epson Ultrachrome HDR (High Dynamic Range) ink set achieves the highest level of colour accuracy

Two choices of frame thickness:

4 cm
2 cm

Currently unavailable for US shipping. For bulk orders please contact customer service.

Sizes

1:1

12x12" (30x30 cm)
16x16" (40x40 cm)
20x20" (50x50 cm)
24x24" (60x60 cm)
28x28" (70x70 cm)

3:1*

8x24" (20x60cm)
12x35" (30x90cm)

3:2*

8x12" (20x30cm)
12x18" (30x45cm)
12x20" (30x50cm)
16x24" (40x60cm)
20x28" (50x70cm)
24x35" (60x90cm)
28x39" (70x100cm)

4:3*

12x16" (30x40cm)
24x31" (60x80cm)

*Available in both landscape and portrait format



PHOTO CALENDARS

PHOTO CALENDAR PRO B2
PHOTO CALENDAR HD
PHOTO CALENDAR BASIC

CALENDARS

PHOTO CALENDAR
PRO B2

The Photo Calendar Pro B2 is a high-quality printing product that should be offered by every professional photographer. The ideal product to showcase life-size photographs.

Design this 12-month flip calendar with 13 pages including a photo cover, in just minutes.

This large size will give your photos a stronger visual impact

Available in 2 formats, landscape and portrait

HP Indigo 12000's seven-dye Electro Ink technology

Arctic Matte, pure white paper

Available Sizes:

20.5x28" (52x72cm)
28x20.5" (72x52cm)



CALENDARS

PHOTO CALENDAR
HD

Don't only give your clients a personalised, fine-art calendar, but a way to remember your name with each passing day

The ideal wall decoration and upselling tool

Fixed image printed on our top level Fuji Silk paper using Nortisu HD printing technology

Calendar pages assembled and packaged separately

Attach calendar pages by removing adhesive covers and sticking to the appropriate place on the image

Quick, easy, no-hassle design

The perfect marketing tool

Currently unavailable for US shipping. For bulk orders please contact customer service.

Available Sizes:

12x24" (30x60 cm)
12x35" (30x90 cm)

Paper Type (image):
Fuji Silk



CALENDARS

PHOTO CALENDAR
BASIC

The popular, personalised product that makes an ideal gift produced with quality, durability and your own work

Printed on Satin paper. Features 13 pages - one for each month as well as a cover page

Available in three formats:

A3 Vertical, A3 Horizontal, and A4 Vertical

Quick and easy to design

The most versatile, cost-effective upselling tool imaginable

Possible uses include:

- Fundraising
- Promotional
- Business Marketing
- Photography Exposure
- Personalised Gift

Personalise your calendar with special dates, anniversaries, birthdays etc.

Currently unavailable for US shipping. For bulk orders please contact customer service.

Available Sizes:

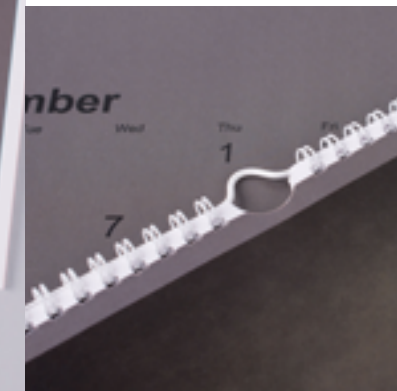
45x32 (A3 Vertical)

32x45 (A3 Horizontal)

32x22.5 (A4 Vertical)

Paper Type (image):

Satin



MAKE IT TRULY YOURS

On top of a variety of materials and paper options, we also offer a wide-range of specific, detailed personalisations.

The availability of these options vary depending on the collection and product.



LASER ETCH

Your logo / design etched into the top layer of the material by a laser. Due to its abrasive nature this option is not available on all materials.



METAL CORNERS AND SEAMS

Include metal corners on the front and back cover corners of your albums

You can choose from single or double seams in a variety of colours.



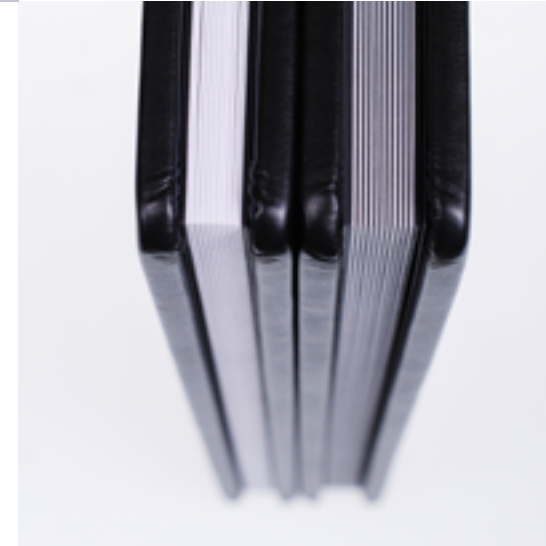
EMBOSSSED TEXT

Available only on selected leatherettes, lettering is imposed in a bookbinding font with the option of plain or coloured foil finish.



SQUARE OR ROUNDED CORNERS

Corners come at a point in our albums, as standard. You can choose to have them rounded out.



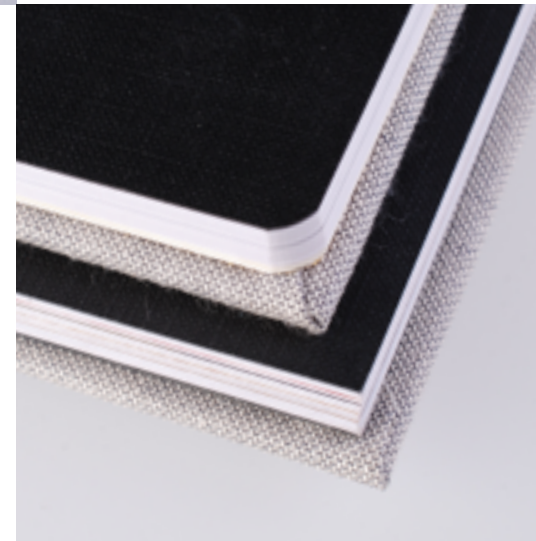
INSIDE COVER COLOUR

Select from three possible inside cover colours: ecru, black or white.



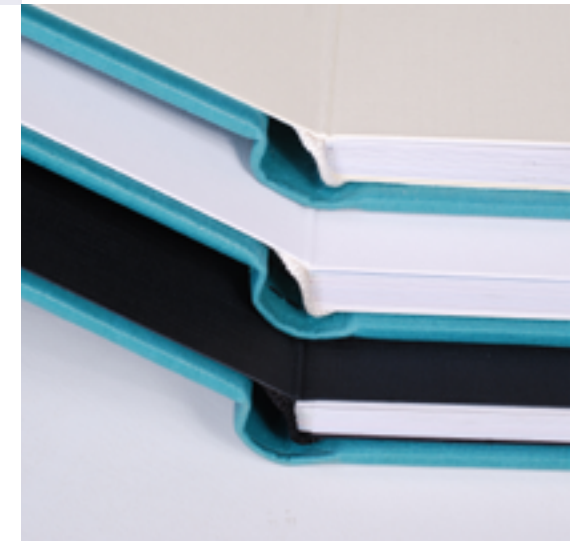
UV PRINT

Have your logo, or a design, be printed on top of textile or leatherette using UV technology.



WHITE OR BLACK SPACERS

Photo Albums come mounted and include spacers. Choose to have these in standard white, or optional black.



PAPER TYPES

We take pride in having the ability to offer a wide variety of paper options throughout our different products; and aim to provide the highest quality papers which only enhance the photos printed on them. Read on for a breakdown of the paper options we provide, their characteristics, as well as a mention of which products they appear in.

PHOTO ALBUMS

Fuji Silk – (pages mounted on rigid boards) standard in albums. Fuji Silk paper is a half-matte, paper with a texture resembling that of a fine honeycomb. This paper is soft to the touch, retains vibrant colours and details while exuding an extremely crisp, elegant finish.

Mix with Fuji Pearl (Metallic) spreads in the same album.

Fuji Pearl (Metallic) – (pages mounted on rigid boards) characterised for its popping details and glossy, pearl-like finish. It’s generally accepted that Fuji Pearl (Metallic) offers the widest tonal range which allows to produce images with rich textured quality. Pearl paper enhances the freshness of the image and assures a clearer more distinct outcome.

Mix with Fuji Silk spreads in the same album.

Canon Deep Matte – (pages mounted on rigid boards) features a smooth, glossless, almost velvet to the feel texture. This fine-art paper accentuates vivid shades, contrasting colours and skin tones. The high-quality images produced on the state-of-the-art Dreamlabo 5000 printer, give off a professional, artistic feel.

Mohawk Eggshell – (pages mounted on rigid boards) a soft feel and vintage vibe, as well as muted light but less than the above mentioned Deep Matte option. Mohawk Eggshell paper combines the tactile feel of uncoated paper with the ink density and sharp detail of coated photo paper.

DREAMBOOK 4K

Canon Gloss – (275 gsm) has a heavy, glossy finish. In general, glossy and/or metallic finishes are renowned for their range, sharpness, vividness, and durability. They will be highly colourful and most purely present the colours and shades of the image.

Ideal for the bold, dramatic shoots where the aim is to achieve an authentic, unapologetic “wow!”

Canon Luster – (275 gsm) that middle ground between glossy and satin. It has incredible definition, natural skin tones, etc, but has less of a gloss finish than the glossy option; yet, does still retain some shine which enhances details and colours on the photo.

Lower gloss also means less problems associated with glare and fingerprints.

Canon Satin – (170 gsm) a near-flat; extremely low-gloss finish with minimal glare. The paper is smooth and soft to the touch as well as provides an elegant finish and effect to any image. A slight texture in the paper, more fine than that of the Luster. The satin finish is ideal for images that will be handled often and are exposed to varied viewing environments.

PHOTO BOOK PRO

Felix Schoeller Luster – (190 gsm) a finish that sits between glossy and matte. The resulting images will retain some shine allowing for details and colours to be enhanced. A lustre paper and finish maintains incredible definition and natural skin tones.

Due to its less glossy nature, this paper will have little to no problems with fingerprints and glaring.

Mohawk Eggshell – (148 gsm and 216 gsm) the Eggshell –is a true, vintage style, matte. The paper maintains a soft, ‘texture’ feel and muted tone; absorbing rather than reflecting light. Mohawk 148 gsm paper is perfect for smaller formats and ideal for full page images. The 216 gsm paper is recommended for larger book formats and is additionally creased towards the spine to ease paging through.

Arctic Matte – (170 gsm), this wood-free paper has a high-tech, cool white base guaranteeing excellent printability. Thanks to this white base colour and opacity it provides stunning results, particularly with contrast – most notably black and whites. It also boasts an enhanced, smooth presentation of your images without glaring issues. The finish results in an artistic, almost vintage, film-like appearance that creates a mood for any style of photography.



BONUS TIP:
Order a Demo Paper Bundle to have all our paper types on hand. Perfect to take along to IPS meetings. Create a Sample Paper Bundle with your own images.





ANOTHER
LEVEL
OF
CUTENESS

HANDMADE
WITH



FOOL
PROOF

ALL OUR MATERIALS ARE
PERFECTLY MATCHING
SO YOU **CAN'T MAKE**
A WRONG DECISION

